



# Ferndown & District U3A

The University of the 3<sup>rd</sup> Age

Registered Charity Number: 1073206

[www.ferndownU3A.co.uk](http://www.ferndownU3A.co.uk)

## PROGRAMME 2018 - 2019

.....A world of leisure interests, on your doorstep!



### AUTUMN TERM 2018

17<sup>th</sup> September - 14<sup>th</sup> December  
(Half term 22<sup>nd</sup> - 26<sup>th</sup> October)

### SPRING TERM 2019

7<sup>th</sup> January - 5<sup>th</sup> April  
(Half term 18<sup>th</sup> - 22<sup>nd</sup> February)

### SUMMER TERM 2019

29<sup>th</sup> April - 24<sup>th</sup> May

FU3A is part of the International Third Age Trust, which aims to provide a range of learning and social activities for people who have stopped working full time.

There is a wide choice of U3As in the East Dorset area and we are delighted that many of our members choose to come into Ferndown from outside towns; perhaps because (unlike some other U3As) we give every member an equal chance to join any of our Groups at renewal time.

**Whilst we may not be the biggest U3A in this area,  
we believe we are the best!**

**We offer around 80 Groups across a wide range of subjects, and this is only possible due to those enthusiastic members who give up their time to lead a Group, sharing their interest and knowledge.**

**This year as well as our established Groups we have 17 NEW Groups.**

**We have a range of social activities from a quiz and a croquet evening during the Summer, to Wine and Cheese evenings, and carefully selected coach trips. Later in this programme you will see that we are currently planning our third overseas Study Trip, this time to the island of Malta.**

**You can find details of all our activities on our WEBSITE,  
[www.ferndownu3a.co.uk](http://www.ferndownu3a.co.uk)**

(but please be aware that this is currently undergoing a rebuild to ensure that it is as vibrant as FU3A itself and we hope it will be available at the start of the new year in September.)

**FU3A Welcomes all member feedback (including negative!) which could make us even better!**

**The Annual General Meeting: Friday 7<sup>th</sup> December 2018 at 10am at St Mary's Church Centre.** Doors open at 9.30 and drinks can be purchased from the Beacon Cafe. A complimentary brunch will follow the AGM and this is open to all attendees.

**The National Office:** is based in Bromley, Kent and may be contacted by telephone: 0208 466 6139, or for additional information, go to their website: [www.U3A.org.uk](http://www.U3A.org.uk)

Ferndown University of the Third Age

HONORARY PRESIDENT - GERRY LEWIS

### COMMITTEE

Chair	Bob Reeve
Vice-Chairs	Clare Clayton & Richard Tucker
Secretary	Glyn Bosanko
Treasurer	Ralph Weeks
Membership Secretary	Richard Tucker
Bridge Co-ordinator	Jenny Bass
Social Secretary	Derek Holden
Groups Co-ordinator and PR	Jean Stone
Accommodation Officer	Clare Clayton
Brochure and Newsletter Editor	Judith Hodges
Website Co-ordinator	Maggie Shew
Equipment Officer	John Mullett
Community Liaison Officer	Yvonne Warner
Beacon Support	Malcolm Gill

### TO CONTACT FERNDOWN U3A



E-mail: [ferndownu3a@googlemail.com](mailto:ferndownu3a@googlemail.com) - this is the preferred option



Write to: Ferndown U3A, c/o 21 Braeside Road, West Moors BH22 0JS

**TO JOIN US please complete the Enrolment Form in the middle of this programme and follow the guidance on pages 17 & 20. At the moment it is not possible to enrol online.**

**The annual fee has been reduced to £39 for the whole year and there is no further charge to join the great majority of our Groups. Where one or two do involve some extra cost this is clearly stated in the Group listing.**

### OTHER THINGS YOU NEED TO KNOW

To keep costs down we communicate by **EMAIL, THE WEBSITE AND OUR NEWSLETTER** which is produced 6 times a year and includes news from the Groups, useful information, puzzles and a book review. We actively encourage all members to contribute to both the NEWSLETTER, and THE WEBSITE. If you don't have a computer, a copy of the latest NEWSLETTER, and details of trips and events are provided on our boards outside the Barrington Centre Conference Room and at the Youth Centre.

## ANNUAL ENROLMENT

Each year we produce details of the Groups we will be offering for the next academic year. Details will normally be available in mid-May so that you can talk to those Group Leaders for the Groups you are interested in, at the Open Day, this year on Friday May 25<sup>th</sup>.

You can send in your Enrolment Form at any time and all forms will be logged, & cheques banked, as they are received. The actual allocation process will begin shortly after **FRIDAY 13<sup>th</sup> JULY**.

Members who return their forms by this date will have an equal chance of getting into their chosen Groups.

Each year we do get a number of popular Groups which are oversubscribed and where there are too many applicants for any one Group we will allocate places by a random draw.

Those members who fail to make the Group will be automatically placed on the waiting list, and advised if a place becomes free.

To be fair to all members please think carefully about how many Groups you are likely to actually attend. Members who miss three sessions without good reason will be removed from that Group.

### WHEN WILL I KNOW WHICH GROUPS I HAVE BEEN ALLOCATED?

At the end of July we will advise members by email that they can access their results via The **BEACON DATABASE** which is reached from the **WEBSITE**. At this time you will be reminded of how to do this.

Members who do not have access to a computer and who have supplied an S.A.E. will receive their results by post.

We will NOT post results to any other members.

The **BEACON DATABASE** will display all the Group information you need to make sure you can get to your Groups, including location, Group Leader's contact details and dates and times of meetings. Be sure to check these as sometimes these details change after the initial arrangements are made in May.

If you are joining after the start of a year, the Membership Secretary will confirm your acceptance and will issue you with a membership number and explain how to access your details on the **The BEACON DATABASE**.



The **WEBSITE** and the **BEACON DATABASE** are the 'go to' places to access up-to-date information on all aspects of FU3A.

Members can view the Groups on which they are enrolled and those where they are waitlisted, on the **BEACON DATABASE** which can be accessed via the **WEBSITE** (see below).

If you do not have access to the internet our friends in Ferndown Library will be very pleased to show you how to do this on one of their computers. Or, of course, you could ask a friend or family member to help.



## ACCESSING THE BEACON DATABASE



HOW DO I?.....[ferndownu3a.co.uk](http://ferndownu3a.co.uk)

On the **HOME** page of the website, click on the **DATABASE** button then on 'Members **CLICK HERE**'. This takes you to the **MEMBERS PORTAL**, entry to which is by entering the requested personal details; a password is not required but you will need your Membership Number.

Once logged in, you will be presented with two options:

- **Calendar**, which lists all Group meetings in date order and;
- **Ferndown U3A Groups**, where you can select the Groups you requested on your enrolment form and check whether you are enrolled or are on the waiting list.

To request further assistance, please contact the Membership Secretary:  
[ferndownu3a@googlemail.com](mailto:ferndownu3a@googlemail.com)

### *HAS ANYTHING CHANGED?*

*REMEMBER to notify the Membership Secretary of any changes to your name, address, telephone number or e-mail address.*

**FERNDOWN U3A**  
**'AUTUMN & SPRING FRIDAYS' 2018-19**  
 A series of talks and presentations  
 Fridays 10.30 – 12 noon  
 Conference Room, Barrington Centre

**2018**

June 1\* **'SUMMER FRIDAY'**

Jul 6 \* **'SUMMER FRIDAY'**

Aug 3 \* **'SUMMER FRIDAY'**

Sept 7 \* **'SUMMER FRIDAY'**

Sept 21 \* **'OPENING FRIDAY'** : *'Round Britain Quiz'* (Rodger Pettengell)

Sept 28 DISCOVERING WESSEX: Opening meeting

Oct 5 \* **'FIRST FRIDAY' TALK** : *'European Law....It's not all about straight bananas!'* (Paul Bennett)

Oct 12 DISCOVERING WESSEX: TALK 1

Oct 19 DISCOVERING WESSEX: VISIT 1

Oct 26 [Half term]

Nov 2 \* **'FIRST FRIDAY' TALK** : *'Experiences of a documentary cameraman'* (Richard Edwards)

Nov 9 DISCOVERING WESSEX: TALK 2

Nov 16 DISCOVERING WESSEX: VISIT 2

Nov 23 DISCOVERING WESSEX: TALK 3

Nov 30 DISCOVERING WESSEX: VISIT 3

Dec 7 **AGM** : 9.30 for 10.00 @ St Mary's Church Centre followed by a buffet brunch

Dec 14 DISCOVERING WESSEX: Quiz

\* Teas and coffees available 9.45 - 10.15

**2019**

Jan 4 \* **'FIRST FRIDAY' TALK** : *'The role of the Crown Prosecution Service'* (Nick Tucker)

Jan 11 DISCOVERING WESSEX: TALK 4

Jan 18 DISCOVERING WESSEX: VISIT 4

Jan 25 \* **'IN-HOUSE FRIDAY'** : *'From Titanic to Costa Concordia – regulation in the British maritime industry'* (Thelma Poole)

Feb 1 \* **'FIRST FRIDAY' TALK** : *'India's Golden Triangle'* (Christopher Legrand)

Feb 8 DISCOVERING WESSEX: TALK 5

Feb 15 DISCOVERING WESSEX: VISIT 5

Feb 22 [ Half-term ]

Mar 1\* **'FIRST FRIDAY' TALK** : *'Lewd wenches & loose-living fellows - Dorset 17<sup>th</sup> Century Magistrates' Records'* (Bruce Upton)

Mar 8 DISCOVERING WESSEX: TALK 6

Mar 15 DISCOVERING WESSEX: VISIT 6

Mar 22 DISCOVERING WESSEX: TALK 7

Mar 29 DISCOVERING WESSEX: VISIT 7

April 5 \* FU3A EASTER STUDY VISIT (April 25-28) : Final Briefing

May 3 \* **'FIRST FRIDAY' TALK** : *'The history of Stewarts Garden Centre'* (Martin Stewart)

May 10 DISCOVERING WESSEX: TALK 8

May 17 DISCOVERING WESSEX: VISIT 8

May 24 \* **OPEN DAY**

For full details of all venues please turn to page 33

## ART



### A1 ART WORKSHOP 1

Barrington Centre, Hayes Room

Come and enjoy our workshop and paint in a friendly and relaxed atmosphere.

No tuition is given, but suggested projects and encouragement from other members are always available. "Our 'mission' is just to relax and enjoy our art with no stress."

### A4 ART FOR ALL

Barrington Centre, Hayes Room

Whether you are a complete beginner or someone who just enjoys painting as a hobby, you are welcome. We can either start you off with the basic knowledge of paint and materials, or give you the opportunity to paint freely in a friendly atmosphere where we all help each other.

### A5 WATERCOLOURS AND MIXED MEDIA

Barrington Centre, Conference Room

Bring your own materials (watercolour, oils, acrylic and pastels) and do your own thing in a friendly and sociable atmosphere. No tuition will be given but lots of moral support. Card makers also welcome.

### A6 ART HISTORY - EUROPEAN ART FROM THE RENAISSANCE

Ferndown Village Hall, Studio Monthly

Dates 2018: Sept 26<sup>th</sup>, Oct 31<sup>st</sup>, Nov 28<sup>th</sup>

2019: Jan 30<sup>th</sup>, Feb 27<sup>th</sup>, Mar 27<sup>th</sup>, May 22<sup>nd</sup>

This year we will look at the themes (such as religion, portraits, landscapes, depiction of women etc.) which run through all periods from the 14<sup>th</sup> Century until the present day.

This will include discussion of the ways in which different artists treat the same subjects.

### A7 TEN GREAT PAINTINGS EXPLORED AND EXPLAINED

Barrington Centre, Studio Spring

Dates: Jan 9<sup>th</sup>, 16<sup>th</sup>, 23<sup>rd</sup> & 30<sup>th</sup>, Feb 6<sup>th</sup>, 13<sup>th</sup>, 27<sup>th</sup>, Mar 6<sup>th</sup>, 13<sup>th</sup> & 20<sup>th</sup>

Ten one-hour illustrated talks, each complete in itself, interrogating some of the most famous, accomplished, memorable and moving paintings in Western Art. This is all-new content, discussing different pictures and using new power-point slides, none of which has been seen in previous talks. We'll look at painters' lives and ideas, review their work and reflect on the best that's been written about them.

### A9 NEW OODLES OF DOODLES (Art as Therapy)

Ferndown Library, Upstairs

From personal experience, and without being consciously aware at the time, this form of alternative art has helped me overcome some difficult experiences over the past few years. For many of us, doodling has helped us through boring meetings or the frustration of a queue when connected to a far-flung call centre. Scraps of paper, the edge of a diary or a desk blotter become the "canvasses" on which we leave our mark. But did you know that those mindless doodles are therapeutic? It can help with thought processes; it can calm the mind, allow our brain to focus and centre us when life or illness seem overwhelming. No artistic ability needed, but if you can hold a pencil, you are half way there! (PS: Only for those who don't mind finding their sense of fun!)

### A10 NEW ABSTRACT ART FOR THE FEARLESS

Ferndown Library, Upstairs

Autumn Tuesdays 1.30 - 3.30  
Fearless: All about learning to paint in an abstract mode, concentrating on shape, colour, tone, line etc. Members will need to provide their own equipment. We will be working in **acrylic only** (no watercolours please!). It will be an intensive group and a list of equipment will be provided before commencement.

### BRIDGE

Co-ordinator Jenny Bass (jmbass17@gmail.com, 01202 873228)



All members

are expected to use Basic Acol / Standard English, Foundation Version. (Weak N.T., Weak take-outs, Stayman & Blackwood. Modern practice encourages Duplicate players to use Transfers & Weak twos bidding).

Some Bridge groups have a requirement that you attend with a partner. For these groups it is essential that both members submit their Enrolment Forms and cheques together in the SAME envelope. If you do not do this no guarantee can be given that both members will be included in the same group if it is oversubscribed.

### BA1 BEGINNERS BRIDGE

Barrington Centre, Hayes

This group is for those who know nothing about Bridge and also for those who know how the game is played but who wish to improve their game. The group is not for the expert and will not make you an expert Bridge player. It does not cover expert bidding, play or defence, but it does cover the ordinary, standard situations, the basics of the Acol system, that make up 95% of the game and in which many novice players go wrong.

### BA2 IMPROVERS BRIDGE

Barrington Centre, Studio

We play friendly Rubber Bridge with the emphasis on enjoyment. Minimal tuition is given but advice is offered when requested. To join this group you should be able to open, respond and re-bid correctly in most circumstances. "Not played for a bit? Perfect! Come and join us."

**THE FOLLOWING BRIDGE GROUPS WILL RUN FOR 50 WEEKS PER YEAR AND ATTRACT AN ACCOMMODATION SUPPLEMENT OF £20 PER MEMBER, PER GROUP, WHICH SHOULD BE ADDED TO THE ENROLMENT FEE**

### B1 CHICAGO BRIDGE

Barrington Centre, Hayes

Start Date: September 3<sup>rd</sup>

We will adopt the Chicago method of changing tables and scoring. This allows varying numbers to be accommodated. You do not need to come with a partner. The aim is to have an enjoyable social afternoon. To join this group you should be able to open, respond and re-bid correctly in the majority of circumstances. No instruction or guidance is to be expected in this group, unless requested. A relaxed Chicago Bridge session.

## B2 DUPLICATE BRIDGE – selected standard

Barrington Centre, Studio

Start Date: September 4<sup>th</sup>

We will play Duplicate Bridge all year. You will need a partner and it is preferable to arrange this in advance, but if you are unable to do so there is often a spare player available. To join this group you should be able to open, respond and re-bid correctly in most circumstances.

(Brian Williams)

Tuesdays 1.30 - 4.30

## B3 DUPLICATE BRIDGE

Barrington Centre, Conference

Start Date: September 5<sup>th</sup>

We will play Duplicate Bridge all year. To join this group you need:

- 1) A regular partner, but there are often temporary partners available when yours is away.
- 2) To be able to open, respond and re-bid correctly in the majority of circumstances.
- 3) One member of the partnership who is able and willing to score.

(Richard Buxton)

Wednesdays 1.30 - 4.30

## B4 CHICAGO BRIDGE

Barrington Centre, Hayes Room

Start Date: September 6<sup>th</sup>

We will adopt the Chicago method of changing tables and scoring. This allows varying numbers to be accommodated. You do not need to come with a partner. The aim is to have an enjoyable social afternoon. To join this group you should be able to open, respond and re-bid correctly in the majority of circumstances.

No instruction or guidance is to be expected in this group, unless requested.

(Yvonne Warner & Kevin Steele)

Thursdays 1.30 - 4.30

## B6 CHICAGO BRIDGE

Barrington Centre, Studio

Start Date: September 7<sup>th</sup>

Just basic Bridge in a friendly and relaxed environment. This group is designed for those moving on from the Improvers' group but can accommodate and would welcome players with more experience to leaven the mixture. It is expected that members will be able to open, respond and re-bid correctly in most circumstances.

(Jenny Bass)

Fridays 1.30 - 4.30

## CRAFTS

### C3 BEADWORK

Ferndown Village Hall, Studio

Learn to make beautiful things with beads. Advice and help will be given at the first meeting on what materials to use.

(Barbara Wescott)

Wednesdays 1.30 - 3.15

### C6 HINTS AND TIPS FOR HOME MAINTENANCE

Barrington Centre, Conference Autumn

Dates: Nov 1<sup>st</sup>, 8<sup>th</sup>, 15<sup>th</sup>, 22<sup>nd</sup> & 29<sup>th</sup>, Dec 6<sup>th</sup> & 13<sup>th</sup>

Not a DIY course. Hints and tips to make you more confident about home maintenance.

We will cover electricity, plumbing, fixtures, glues, paints and stains, and much much more!

(John Drew)

Thursdays 11.15 - 12.30



## C7 CRAFTS

Barrington Centre, Studio

This is a general craft group. We will include card-making as well as crafts suggested by members. Members are encouraged to bring their own materials, however some may be purchased at meetings. Feel free to bring along your own craft project and join this friendly group, where new members will be warmly welcomed.

(Jan Gransden)

Tuesdays 11.00 - 12.30

## DISCUSSION GROUPS

### D3 GREEN FINGERS

At various homes

Monthly

(Jane Norris & Barbara Gooch)

3<sup>rd</sup> Wednesday 2.00 - 4.00ish

Dates 2018: Sept 19<sup>th</sup> at Barbara's home (address to be supplied), Oct 17<sup>th</sup>, Nov 21<sup>st</sup>

2019: Jan 16<sup>th</sup>, Feb 19<sup>th</sup>, Mar 19<sup>th</sup>, May 15<sup>th</sup>

Gardening for beginners and experienced alike. Come along and share ideas and knowledge with like-minded 'green fingers'. Please dress suitably for the weather.

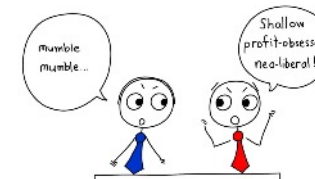
### D5 CURRENT AFFAIRS 1

Barrington Centre, Conference

Members enjoy a full and free discussion of important current topics.

(Brian Williams)

Thursdays 9.30 - 10.45



### D5A CURRENT AFFAIRS 2

Ferndown Youth Centre

Let's meet up to discuss the current affairs of the week. The ups, the downs, the truth, the fiction, the rational and the outrageous and the "post truth", whatever that may mean. Vent your views, share your passion and have your say. Do join us and friends for the highlight of the U3A week!

(Christina and James Brewster)

Wednesdays 11.00 - 12.15

### D6 INTRODUCTION TO PHILOSOPHY

At home in Northbourne

Autumn term

(Judith Hodges)

Wednesdays 2.00 - 3.00

Dates: Sept 19<sup>th</sup> & 26<sup>th</sup>, Oct 3<sup>rd</sup>, 10<sup>th</sup>, 17<sup>th</sup> & 31<sup>st</sup>, Nov 7<sup>th</sup> & 14<sup>th</sup>

No qualifications necessary - just an interest in thinking about, and discussing, the main questions which philosophers have pondered for thousands of years.

### D7 A BROAD LOOK AT THE LAW

Ferndown Village Hall, Studio

Autumn Fortnightly

(Clare Clayton)

Thursdays 11.15 - 12.30

Dates: Sept 20<sup>th</sup>, Oct 4<sup>th</sup> & 18<sup>th</sup>, Nov 1<sup>st</sup>, 15<sup>th</sup> & 29<sup>th</sup>

This group runs on a two-year cycle. 2018 will therefore be a repeat of the second year group. We will consider such topics as Inquests, Assisted Suicides and Euthanasia.

### D10 PSYCHOLOGY

Ferndown British Legion, Upstairs

Fortnightly

(Judith Hodges)

Tuesdays 9.30 - 10.45

Dates 2018: Sept 18<sup>th</sup>, Oct 2<sup>nd</sup>, 16<sup>th</sup> & 30<sup>th</sup>, Nov 13<sup>th</sup> & 27<sup>th</sup>, Dec 11<sup>th</sup>

2019: Jan 8<sup>th</sup> & 22<sup>nd</sup>, Feb 5<sup>th</sup>, Mar 5<sup>th</sup> & 19<sup>th</sup>, Apr 2<sup>nd</sup> & 30<sup>th</sup>, May 14<sup>th</sup>

What do we know about the human brain? What are the limits of our knowledge?

Cognitive Development - how our brain makes us who we are. Why are we all so different?

Nature versus nurture. Social and occupational psychology. No previous knowledge needed.

**D11 NEW WORLD RELIGIONS 2 - THE LAST MILLENNIUM** (Sue Gomm)  
*At home in Ferndown Autumn and Spring Mondays 2.00 - 3.30*  
 This group looks at new religious ideas and developments over the last 1000 years; this has been a time of change and reformation in many religions. We will look at some major religious thinkers and at religious ideas which have had a profound effect on the 20<sup>th</sup> Century.

**D16 RANDOM THOUGHTS** (Jan Gransden)  
*Ferndown British Legion, Upstairs Autumn and Spring*  
*Fortnightly Wednesdays 11.00 - 12.15*  
*Dates 2018: Sept 19<sup>th</sup>, Oct 3<sup>rd</sup>, 17<sup>th</sup> & 31<sup>st</sup>, Nov 14<sup>th</sup> & 28<sup>th</sup>, Dec 12<sup>th</sup>*  
*2019: Jan 9<sup>th</sup> & 23<sup>rd</sup>, Feb 6<sup>th</sup>, Mar 6<sup>th</sup> & 20<sup>th</sup>, Apr 3<sup>rd</sup>*

A lighthearted discussion group or excuse for a meeting of ideas where topics are chosen by the group. The selected subject is discussed from whatever perspective each member wishes to put forward.

**D18 NEW ECONOMICS OF EVERYDAY LIFE** (Douglas Lock)  
*Barrington Centre, Studio Autumn and Spring Tuesdays 9.30 - 10.45*  
 Each week we will examine one key idea in Economics and consider how this idea applies to you and your actions whether you have studied economics or not. Earning and spending involves making choices and the economic calculations that we all make when we choose between one opportunity and another. It covers the economic threats and opportunities that affect us all in our daily lives, and will look at the economic background to the politics and culture which affect those choices and will help you to understand the economic background which drives them.  
 Economics has become much more interesting since the failure of the standard economic models to predict the great financial crash of 2007/8 and we will examine the reasons for that failure and the way ahead for a better understanding of the real nature of economic relationships in the 21st Century. The economic situation in our town, our country and in the global economy will have profound effects on our way of life and our own well being. Don't be put off by the word "economics" it only means "household management".

## GAMES

**G1 SCRABBLE, CANASTA AND OTHER GAMES** (Patricia Brown)  
*Ferndown Village Hall, Mick Arnold Room Wednesdays 1.15 - 3.15*  
 It will be mainly Scrabble with the introduction of Rummikub, Triominos, Canasta etc.  
 Please bring games you wish to play to each session.

**G2 NEW JIGSAW PUZZLES** (Mike Andrews)  
*At home in Kinson Autumn and Spring*  
*Fortnightly Wednesdays 10.00 - 12.00*  
*Dates 2018: Sept 19<sup>th</sup>, Oct 3<sup>rd</sup>, 17<sup>th</sup> & 31<sup>st</sup>, Nov 14<sup>th</sup> & 28<sup>th</sup>, Dec 12<sup>th</sup>*  
*2019: Jan 9<sup>th</sup> & 23<sup>rd</sup>, Feb 6<sup>th</sup>, Mar 6<sup>th</sup> & 20<sup>th</sup>, Apr 3<sup>rd</sup>*

As this is a new idea, the format will be decided by those attending.  
 My first thoughts are six or so people to sit around a table and 'do' a 1000 piece jigsaw puzzle. I guesstimate around 2 hours! Members can leave at any time, or carry on until we finish.



## HISTORY

**H2 THE MAKING OF THE ENGLISH PEOPLE** (Jim Barber)  
*Ferndown Village Hall, Mick Arnold Room Tuesdays 11.00 - 12.45*  
 From their beginning to the present day, a visual, uncomplicated, and thought-provoking look at the events that have shaped the English people. You will be helped on a journey through some of the major events and people that still affect the English values and views of today.

**H3 THE BLUE LAMP - Part 4** (Rodger Pettengell)  
*Barrington Centre, Conference Spring Wednesdays 11.00 - 12.15*  
*Start Date: January 9<sup>th</sup> 2019*  
 A completely new series of talks not previously given. These will be interesting cases, not just murders, some of which will involve people who lived in or who visited Bournemouth. Other aspects of police work may be included.

**H5 FAMILY HISTORY — THE BASICS** (Brian Bevis)  
*Ferndown Village Hall, Mick Arnold Room Autumn Thursday 9.30 - 10.45*  
 Curious about who contributed to your DNA? Put off by the media image of: 'you need us', which websites, books, etc generate, and paying their costs? Maybe it's the idea that it is very difficult that puts you off. No doubt: 'it's easy when you know how', and gaining experience takes time. Yet you could use my years of experience of developing successful, tried and tested methods, as a short cut to your success. It's not difficult, or expensive; in fact it's as easy as ABC. This introductory course explains what not to do, to be successful, and can lead you to the advanced course (H6 below).  
 Any questions? E-mail me at [brian.bevis@sky.com](mailto:brian.bevis@sky.com). P.S. If you have done the course before and could do with a refresher, with some new methods/ideas, then sign up.

**H6 FAMILY HISTORY — FURTHER BACK** (Brian Bevis)  
*Ferndown Village Hall, Mick Arnold Room Spring Thursdays 9.30 - 10.45*  
 If you have completed the H5 group, then you can step back further in time with this second group. Pre -1837 requires different procedures and plans for identifying and learning about your ancestors. Family history is now stretching past the written word of 1068, opening other possible channels of learning. This is an opportunity to know those, who for the past 12 generations, have contributed to your DNA.

**H13 NEW IN OUR LIFETIME** (Bob Reeve)  
*Ferndown Village Hall, Studio Autumn Wednesdays 3.30 - 4.45*  
*Dates: Oct 31<sup>st</sup>, Nov 7<sup>th</sup>, 14<sup>th</sup>, 21<sup>st</sup> & 28<sup>th</sup>, Dec 5<sup>th</sup>*

A look at key 20<sup>th</sup> Century events in Britain - starting in the 1930s and ending with Thatcher's legacy. Group members will be invited to reflect on why these decades were so important for the country and for them as individuals.

**H14 NEW HISTORY OF IRELAND (mainly Anglo-Irish relations)**  
 (Tom McConnell)  
*Barrington Centre, Studio Wednesdays 11.00 - 12.15*

An exploration of how the development of Ireland has been inextricably linked to its relationship with the English/British.

**H15 NEW ROMAN HISTORY** (Thelma Poole)  
*Barrington Centre, Conference Autumn Mondays 11.00 - 12.15*  
 From prehistoric origins to Romulus and Remus and the creation of Rome and the founding of the Roman Republic.

## JOURNEYS OF DISCOVERY

### J1 DISCOVERING WESSEX

*Barrington Centre, Conference* Monthly (Judith Hodges)  
Fridays 10.30 - 12.00  
Talk Dates 2018: Sept 28<sup>th</sup>, Oct 12<sup>th</sup>, Nov 9<sup>th</sup> & 23<sup>rd</sup>, Dec 14<sup>th</sup>  
2019: Jan 11<sup>th</sup>, Feb 8<sup>th</sup>, Mar 8<sup>th</sup> & 22<sup>nd</sup>, May 10<sup>th</sup>

Visits follow a week later and each date will be confirmed at the talk.  
Our range includes Dorset, Wiltshire, Hampshire and Somerset. Each month we will discover a new place researched by a member of the group, and later those who wish can make a visit there. Just come along with an idea of somewhere you are passionate about and we can look forward to another successful year.

### J4 NEW AN HISTORICAL TRAVELOGUE - THE ISLAND OF MALTA

*Ferndown Scout Centre* Spring (Bob Reeve)  
Wednesday 1.30 - 3.00

Dates 2019: Mar 6<sup>th</sup>, 13<sup>th</sup>, 20<sup>th</sup> & 27<sup>th</sup>

Malta has been occupied by the Phoenicians, the Romans, the Arabs, the Normans, the Spanish, the French, the British, and (nearly) the Germans. All have left their legacy on the historical landscape of a Mediterranean island smaller than the Isle of Wight. Come and explore it - in preparation for the FU3A Study Visit there in April 2019.

## KEEPING FIT AND HEALTHY



### K1 BADMINTON 1

*Ferndown Village Hall* (Keith Verrion)  
Tuesdays 1.00 - 2.30

A friendly, enthusiastic & mixed ability group. We welcome players of all standards but some experience is necessary. If you played in the past, you probably still can! Numbers are strictly limited to ensure that participants have plenty of exercise. No need to bring a partner.

### K2 KEEP FIT & HEALTHY BADMINTON

*Ferndown Village Hall* (Pat O'Riordan)  
Tuesdays 2.30 - 4.30  
As K1.

### K3 LINE DANCING

*Ferndown Youth Centre* (Jean Horsey)  
Tuesdays 1.30 - 2.30

Beginners leading to improvement! Come along and have some fun - no partners needed. Could new members please mark on the enrolment form whether they are beginners or improvers.

### K4 TABLE TENNIS - IMPROVERS

*Ferndown Youth Centre* (Ruth Muspratt)  
Wednesdays 9.30 - 10.45  
The group has a great time with much laughter and fun, but also improved play.

*Fancy a few days in the Maltese sunshine.....?  
then sign up for the Ferndown U3A Study Visit to Malta  
in April 2019*



**Just complete the form overleaf**

**Detach this page  
and send it along with  
your Enrolment Form**



**Malta** has been occupied by the Phoenicians, the Romans, the Arabs, the Normans, the Spanish, the French, the British, and (nearly) the Germans. All have left their legacy on the historical landscape of a Mediterranean island smaller than the Isle of Wight. Come and explore it - in preparation for the FU3A Study Visit there in April 2019.

*We are arranging a Study Visit there with the provisional dates  
25-28 April 2019.*

*The cost - including an Early Bird discount - will be approx £360pp depending on the number who apply. The single room supplement will be approx £110pp.*

***This package includes:***

- ***direct flights between Bournemouth and Malta, including carry-on luggage***
- ***three nights en-suite hotel bed-&-breakfast accommodation***
- ***a 3-course group meal on the first night***
- ***coach transfers throughout the visit***

*We will be visiting historic sites on the island - including the Hagar Qim & Mnajdra cliff-top temples, Marsaxlokk, Rabat, Mdina and the Mosta dome - as well as making a full-day visit to Valetta itself.*

*This trip builds on the success of the FU3A Study Visits to the Normandy D-Day beaches in 2017, and to Girona & Barcelona in 2018.*

*We anticipate that this visit to Malta will be oversubscribed, in which case names will be 'drawn out of the hat' - so be sure your application meets this year's deadline of **Friday 13th July!***

*To book your place, complete the form opposite and return it in the same envelope as your Groups Application for 2018-19, together with a SEPARATE cheque for £100pp made payable to 'Ferndown & District U3A'.*

*If you detach this form plus the one for the Malta visit, you can read the course details sequentially*

## **COMPLETING AND RETURNING THE ENROLMENT FORM**

### **Important Notes About the Enrolment Process**

Before you start to complete your form, please read the Notes on page 20 about enrolling, how to pay the Enrolment Fee, and how to sign up for Gift Aid.

You may choose up to 8 Groups in total. You will be allocated your first four choices (or put on the waiting list) before we consider your remaining choices.

**Please be aware that in making your choices you are committing to attend each Group on a regular basis. It is unfair to other members to take up a place which you do not use, as well as being disheartening for the Group Leaders involved.**

***This year we will impose the rules for non-attendance more strictly. If you fail to attend three consecutive sessions without notifying the Group Leader beforehand, you will be removed from the Group and the place reallocated.***

**To be included in the main round of allocations, your Enrolment Form needs to arrive by FRIDAY JULY 13<sup>th</sup> at the latest.**

**It is important that we receive as many applications as possible by this cut-off date, to reduce the risk that a Group has to be withdrawn because of lack of support.**

**For applications received after the cut-off date, any remaining places will be allocated on a first-come, first-served basis.**

**All applications will be considered together shortly after the date above, irrespective of when they are posted.**

**You will be able to access your record on the BEACON DATABASE on July 31st to find out the Groups on which you have been successfully registered.**

**ENROLMENT FORM 2018-19**

MEMBERSHIP NUMBER .....

SURNAME ..... FIRST NAME ..... TITLE .....

ADDRESS ..... POSTCODE .....

TEL NO. .... E-MAIL ADDRESS .....

Code	Subject	Day

**You may apply for up to 8 Groups and precedence will be given to the first 4 choices above. Please DO NOT apply for more Groups than you intend to join.**

**GIFT AID** - I am a UK tax payer and wish to gift aid my donation and any donations I make in the future, or have made over the past 4 years, to Ferndown U3A (Charity number: 1073206).

Please sign below, even if you have done so in previous years.

I enclose a cheque for £..... Please sign: ..... Date: .....

**EMERGENCY CONTACT** - Please provide details of someone we may contact in the event of any accident or emergency.

Name ..... RELATIONSHIP .....

TELEPHONE NUMBER ..... EMAIL: .....

**PRIVACY STATEMENT**

Please sign below to give us permission to use the information you have supplied in the following ways:

- To store it securely for membership purposes.
- To communicate with you as a U3A member.
- To share with the leaders of your Groups that you are a member of.
- To send you general information about the Third Age Trust (the national organisation to which U3As are affiliated).

**I consent to my data being used for membership purposes as detailed above.**


Signed: ..... Date:.....

**Please be advised that you can request for your data not to be used for any of these purposes at any time by contacting us: Email: [ferndownu3a@googlemail.com](mailto:ferndownu3a@googlemail.com)**

## HOW TO ENROL

1. Complete the Enrolment Form. *It is not yet possible to enrol on-line or by email.*
2. If you have an email address, please print it clearly on your Enrolment Form, even if you have given it to us previously.
3. SIGN the GIFT AID DECLARATION if you are a tax payer.

### Gift Aid



If you pay tax please sign the Gift Aid declaration. We can then claim back from HMRC the tax you have paid on your membership fee, at no cost to you!

This *SMALL* action can make a *BIG* difference to our balance sheet, and without it we would have to increase the annual fee by about £8 per member.

4. Work out your personal Enrolment Fee.

The annual fee for this year is **£39**.

Those attending Bridge Groups which run for 50 weeks of the year should add an accommodation supplement of £20 per member, per Group.

5. Enclose a cheque payable to: *Ferndown and District U3A*.
6. ENCLOSE A STAMPED, SELF ADDRESSED ENVELOPE, ONLY IF YOU ARE UNABLE TO ACCESS THE INTERNET.
7. Post to: *Ferndown U3A, c/o 21 Braeside Road, West Moors BH22 0JS*  
Please make sure you include the post code.

Note: Should you need another Enrolment Form you can print one from the WEBSITE.



## Ferndown University of the 3<sup>rd</sup> Age

STUDY VISIT TO MALTA : 25-28 APRIL 2019

### BOOKING FORM

Name:

Address:

Home phone:

Mobile:

E-mail:

- \* Please reserve ..... places in an ensuite double room at a cost of c.£360 per person
- \* Please reserve ..... places in an ensuite twin room at a cost of c.£360 per person
- \* Please reserve ..... places in an ensuite single room at a cost of c.£470 per person

I enclose a cheque for £ ..... (£100 per person) as a non-refundable deposit, made payable to 'Ferndown & District U3A'.

I understand that in the unlikely event of the visit not taking place, my deposit will be refunded in full.

I understand that I will be informed by Friday, 5th October 2018 about the final amount payable per person, and agree to pay the balance due by **Friday, November 2nd 2018**. (This sum is non-refundable should you subsequently withdraw for any reason).

Signed:

Date:

**Please return this form in the same envelope as your Enrolment Form for 2018 - 2019, together with a separate cheque for £100pp made payable to Ferndown & District U3A**



Because of the Island's terrain this trip is not suitable for those with limited mobility.

Please note that all communication and information relating to this Group will be by email.

**K5 TABLE TENNIS - EXPERIENCED**

*Ferndown Youth Centre*  
Experienced players only.

(Bob Whittall)  
Wednesdays 11.00 - 12.15

**K6 KEEP FIT**

*United Church, Ferndown*

(Kath Hollingworth)  
Wednesdays 2.00 - 3.00

This exercise group is aimed at improving health, fitness and quality of life with a varied programme of evidence-based exercises which are known to be safe and effective to improve mobility, stamina, muscle and bone strength, flexibility, balance and heart health. The programme will be varied and fun. It will be tailored to meet all levels of fitness and health. No one will feel left out. A charge of the equivalent of £2 a session is payable at the beginning of each term.

**K8 ENGLISH COUNTRY DANCING OF THE 18<sup>th</sup> CENTURY**

*Ferndown British Legion*

(Margaret Thomas and Diane Conway)  
Thursdays 11.00 - 12.30

Many are unaware of the long and continuing tradition of English country dancing which has evolved and delighted people for centuries. In this group we explore dances from 1650 -1850. Come and discover this very sociable scene and keep this tradition alive and flourishing.

**K9 TABLE TENNIS - EXPERIENCED 1**

*St Anthony's Church Hall, West Moors*  
Experienced players only.

(Bob Whittall)  
Fridays 9.30 - 11.00

*During Lent meetings will be held on Tuesdays.*

**K10 TABLE TENNIS - EXPERIENCED 2**

*St Anthony's Church Hall, West Moors*

(Bob Whittall)  
Fridays 11.00 - 12.30

This group is mainly for experienced players.  
*During Lent meetings will be held on Tuesdays.*



**K11 ENGLISH COUNTRY DANCING WORKSHOP**

*Ferndown Village Hall*

(Margaret Thomas)  
Tuesdays 4.30 - 6.00

In this group we look closely at a small number of more demanding dances, with special attention to style and movement. Members should be familiar with the basic figures of English Country Dancing.

**K13 BALLROOM / LATIN DANCING**

*Ferndown British Legion*

(Jean and Brian Morgan)  
Wednesdays 9.30 - 11.00

We will continue to cover the basic steps in all the main dances, whilst adding some style! Partners not absolutely necessary.

**K14 BADMINTON FOR FUN**

*Ferndown Village Hall*

(Tricia Hillier and Judy Fenton)  
Mondays 1.30 - 4.30

Come along if you enjoy playing Badminton in an informal and friendly atmosphere.

## K15 NEW SUPER MOVERS

Barrington Centre, Conference

Do you love moving to music without being told what to do? Come along and move around, get some exercise as well as getting those 'happy' thoughts and feelings surfacing. Loosen up and jig about. What could be better for a Monday morning?

(Jo Brearley)

Mondays 9.30 - 10.45

## K16 NEW TABLE TENNIS STARTERS

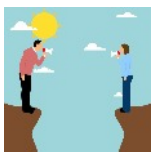
Ferndown Youth Centre

A new group for players with very little or no experience. It's a great sport for all ages, which you can play with your grandchildren! Some qualified coaching of basic skills will be available and modern rules will be taught; but, the main purpose will be fun and exercise in a friendly atmosphere! Players will be advised on bat purchase before the group begins.

(Ralph Weeks)

Mondays 9.30 - 11.00

## LANGUAGES



### L5 SPANISH

At home in Ferndown

The Spanish group will continue to run during the coming year. It is not a group for absolute beginners but rather suits those with a little knowledge of Spanish who would like to learn more or retain what they do know.

(Tim Lines)

Wednesdays 10.45 - 12.15

### L9 GERMAN LANGUAGE - YEAR FIVE

Ferndown Youth Centre, Room

This is a continuation of the group started in 2014. Although it is a grammar-based group the emphasis is on conversation. The book we are using is *Living German (7th Edition)*.

(Anne Rio)

Wednesdays 9.30 - 10.45

### L11 GERMAN - YEAR THREE

At home in Ferndown

We are a small, friendly group. Please join us if you know a little German.

(Jean Morgan)

Thursdays 9.30 - 10.45

## MUSIC

### M1 ENJOYING MUSIC

Ferndown Village Hall, Mick Arnold Room

We will study a wide variety of classical music using the very best recordings and scores where appropriate. We shall also place the music in context linking it to the life and times of the composer and to the history and art of the period.

(Rachel Lewington)

Mondays 2.15 - 3.45

### M3 ENJOY SINGING

Pinehurst Community Church

This group is for all who would like to 'enjoy singing' and feel the many benefits this brings to us. We will tackle a variety of popular and light classical songs, including songs from well-known musicals. Although some experience could be useful, it is not essential, and ALL are welcome.

(David Oddy)

Thursdays 2.00 - 3.15

### M4 MUSIC APPRECIATION

St Mary's Church, Beacon Room

Fortnightly Thursdays 2.00 - 4.00

Dates: 2018: Sept 20<sup>th</sup>, Oct 4<sup>th</sup> & 18<sup>th</sup>, Nov 1<sup>st</sup>, 8<sup>th</sup> & 22<sup>nd</sup>, Dec 6<sup>th</sup>

2019: Jan 10<sup>th</sup> & 24<sup>th</sup>, Feb 7<sup>th</sup>, March 7<sup>th</sup> & 21<sup>st</sup>, April 4<sup>th</sup>, May 2<sup>nd</sup> & 16<sup>th</sup>

Come and enjoy listening to and learning about different composers and different styles of music. We will look at the context of the music in terms of culture and society. This is a very relaxing music session. No prior knowledge is necessary.

(Jo Brearley)

### M5 OPERA

At home in Colehill

Monthly

4th Friday 1.30 - 4.00 (or later)

Dates 2018: Sept 28<sup>th</sup>, Oct 26<sup>th</sup>, Nov 23<sup>rd</sup>

2019: Jan 25<sup>th</sup>, Feb 22<sup>nd</sup>, Mar 22<sup>nd</sup>

Life, love, sex and death! Viewing and discussing operas, all with English sub-titles.

Interval with refreshments.

(John Gooch)

### M6 ANYTHING BUT OPERA

At home in Parley Autumn & Spring Fortnightly

Dates 2018: Sept 21<sup>st</sup>, Oct 5<sup>th</sup> & 19<sup>th</sup>, Nov 2<sup>nd</sup>, 23<sup>rd</sup> & 30<sup>th</sup>, Dec 14<sup>th</sup>

2019: Jan 11<sup>th</sup> & 25<sup>th</sup>, Feb 8<sup>th</sup> & 22<sup>nd</sup>, Mar 8<sup>th</sup> & 22<sup>nd</sup>

Operetta, musical comedy, Hollywood musicals etc. Complete work at each session.

(Martin Tuck)

Fridays 2.00 - 4.00

### M9 THE REALLY AWFUL SINGING GROUP

Ferndown Village Hall, Studio Monthly

Dates: 2018: Oct 2<sup>nd</sup>, Nov 6<sup>th</sup>, Dec 4<sup>th</sup>

2019: Jan 8<sup>th</sup>, Feb 5<sup>th</sup>, Mar 5<sup>th</sup>, Apr 2<sup>nd</sup>, May 7<sup>th</sup>

Do your family hate it when you sing? Can you only let rip when alone in the car or the bath? Come and join other unappreciated folk and sing along to popular songs from the last 60 years.

These include songs from Musicals, Country music, Rock anthems and anything else we fancy! The only qualification is a terrible singing voice!!



(Judith Hodges)

Tuesday 2.00 - 3.15

### M10 UKULELE BAND

Ferndown Youth Centre, Hall

The band was only formed last year but already has the makings of a competent 'UKE Band', which includes members who started with no experience at all. New members are welcome.

(Robert Gomm)

Wednesdays 1.15 - 2.45

### M11 NEW UKULELE BEGINNERS

At home in Ferndown

Absolute beginners receive tuition leading to membership of M10 above.

(Robert Gomm)

Thursdays 9.00 - 10.30

### M12 NEW SING ALONG WITH GREAT BACKING TRACKS

At home in Ensbury Park

Why not join Chrissie & James, singing to great backing tracks of 'Yesterday's Songs for Yesterday's Teens'. Remember Dusty, Elvis, Cliff, & many more? No auditions, just a fun afternoon. Ring 01202 083184 for further details.

(Christina and James Brewster)

Mondays 2.00 - 3.30

## NATURE



**N1 NATURE WALKS** (Clare Clayton and John Mullett)  
*1st Saturday monthly - weather permitting*  
*Dates 2018: Oct 6<sup>th</sup>, Nov 3<sup>rd</sup>, Dec 1<sup>st</sup>*  
*2019: Feb 2<sup>nd</sup>, Mar 2<sup>nd</sup>, May 4<sup>th</sup>*  
These gentle rambles typically last two hours and cover approximately 3 miles over easy terrain avoiding steep hills and stiles wherever possible.

## TECHNICAL AND SCIENTIFIC TOPICS

**T1 ASTRONOMY** (Graeme Nash)  
*Ferndown Village Hall, Studio* Mondays 2.00 - 4.00  
This one-year group deals with all aspects of astronomy. Topics considered include some basics of the Earth's place in the universe, the history of astronomy to 1900, instruments and observing techniques, the solar system, the Sun, the stars, galaxies and cosmology, including the origin of the universe. Weather permitting, observations of the Sun (using safe filters) and Venus are made. The presentation is informal with use made of view graphs, slides, models and astronomical equipment. No previous knowledge of astronomy is assumed. Active participation by group members is encouraged and extra topics suggested by them are warmly welcomed.

**T13 NEW eBay FOR BEGINNERS** (Richard Tucker)  
*Ferndown Village Hall, Studio* Single session Tuesday 1.30 onwards  
*Date: January 29<sup>th</sup> 2019*  
A basic introduction to selling and buying on eBay.

**T14 NEW THE SOLAR SYSTEM AND OUR PLACE IN IT** (John Mullett)  
*Ferndown Village Hall, Mick Arnold Room* Autumn and Spring  
*Fortnightly* Tuesdays 10.30 - 11.45  
*Dates 2018: Sept 18<sup>th</sup>, Oct 2<sup>nd</sup>, 16<sup>th</sup> & 30<sup>th</sup>, Nov 13<sup>th</sup> & 27<sup>th</sup>, Dec 11<sup>th</sup>*  
*2019: Jan 8<sup>th</sup> & 22<sup>nd</sup>, Feb 5<sup>th</sup>, Mar 5<sup>th</sup> & 19<sup>th</sup>*  
An introduction to the Solar System in fortnightly lessons. Briefly discussing the Universe, the Milky Way, our Sun and the planets and moons which make up our Solar System. Will include up-to-date information and projected images.

## WORDS - WRITTEN, SPOKEN AND VISUAL

**W1 SHAKESPEARE** (Ian Burr)  
*At home in Ferndown* Autumn & Spring Thursdays 9.30 - 10.45  
A participatory Group. Part play-reading and part discussion.

**W2 DRAMA WORKSHOP**  
(Rita Burke)  
*Ferndown British Legion, Hall*  
Tuesdays 2.00 - 4.00

I am a retired drama teacher who has produced and directed many school productions from panto to Shakespeare. Come along and forget yourself, experience improvisations of character, situations tragic or comic, based on real or imaginary lives. Do something you have always dreamed about and help create a piece of theatre. Men most welcome!



**W3 READERS' CIRCLE** (Clive Hood)  
*Ferndown British Legion, Upstairs* Monthly Wednesday 11.00 - 12.15  
*Dates 2018: Sept 19<sup>th</sup>, Oct 17<sup>th</sup>, Nov 21<sup>st</sup>, Dec 19<sup>th</sup>*  
*2019: Jan 16<sup>th</sup>, Feb 20<sup>th</sup>, Mar 20<sup>th</sup>, Apr 17<sup>th</sup>, May 15<sup>th</sup>, Jun 19<sup>th</sup>*  
We read mostly contemporary fiction plus the occasional biography. At our first meeting on Sept 19<sup>th</sup> Sept we'll discuss *The Lacuna* by Barbara Kingsolver. For any queries; call Clive on 01425 476540

**W4 CREATIVE WRITING** (Peter Hunt)  
*Ferndown Youth Centre, Room* Thursdays 10.00 - 11.15  
This group works as a self-directed workshop, with members taking it in turn to lead the group. It is for people who like to express their feelings through prose or poetry, or who wish to try their hand at creating characters, situations or stories. Members give each other lots of encouragement and help. Writing is for our own pleasure and beginners are most welcome.

**W5 PLAY READING** (Jan Gransden and Ann Williams)  
*At home in Ferndown* Thursdays 2.00 - 4.00  
We read a range of plays, old and new, and meet a range of playwrights. The group is not involved in performance so you can relax. Where else could you be a stropky teenager, a clever detective, a young lover, or a wicked villain for the afternoon? Just bring your voice!

**W6 FILM STUDIES** (Alastair Crompton)  
*Barrington Centre, Hayes Room* Autumn & Spring  
*Fortnightly* Fridays 2.00 - 4.30  
*Dates 2018: Sept 21<sup>st</sup>, Oct 5<sup>th</sup> & 19<sup>th</sup>, Nov 2<sup>nd</sup>, 16<sup>th</sup> & 30<sup>th</sup>, Dec 14<sup>th</sup>*  
*2019: Jan 11<sup>th</sup> & 25<sup>th</sup>, Feb 15<sup>th</sup>, Mar 1<sup>st</sup>, 15<sup>th</sup> & 29<sup>th</sup>*  
The films we show in the Film Club are chosen by members. The most recent category has been Great Musicals, a theme so popular it may be continued. Proposed theme for new term: Heist movies, which usually consist of scenes explaining the 'set-up', gathering the team, executing the deed, surviving the fall out, avoiding the double-cross and getting away scot-free. We start the Autumn season with *The Good Thief*, a skilled re-make by Neil (*The Crying Game*) Jordan of the French heist thriller *Bob le Flambeur*. The rest of the year is up to you. Whilst there are no rules, it would be good to keep the maximum length of our films to under 100 minutes. Once we've chosen and viewed a film, we talk over the pros and cons, what we liked, what we didn't, and why. The afternoon culminates in a vote, after which we all award what we think is the appropriate number of stars.

**W8 THE BIBLE IN LITERATURE AND AS LITERATURE** (Helen Tremain)  
*St Mary's, Church Lounge* Autumn and Spring Tuesdays 9.30 - 10.45  
*The Bible*, a publishing phenomenon and the best seller to date. *The Bible* is not like any other book, having a complex history of its own, distinct from the many frightening stories it happens to contain. Whether we regard the Bible as having religious authority or not, we shall acknowledge the debt we owe its creators and translators, in terms of the development of language and the ideas they have enabled us to consider now.



**W10 CRIME AND THRILLER BOOK GROUP** (Jenny Boyce)  
*At home in Ferndown* Autumn & Spring Monthly Mondays 3.00 - 4.30  
*Dates: 2018: Oct 1<sup>st</sup>, Nov 5<sup>th</sup>, Dec 3<sup>rd</sup>*  
*2019: Jan 7<sup>th</sup>, Feb 4<sup>th</sup>, Mar 4<sup>th</sup>*  
If you enjoy reading thrillers and mystery books, come and join us. The Group chooses a book to read each month, which we then discuss. Summer Reading for first meeting at the beginning of term is *The Long Drop* by Denise Mina and *Into the Water* by Paula Hawkins.

## W14 NEW GREAT BOOKS, GREAT IDEAS

St Mary's Church Centre, Venue 1

(Helen Tremain)  
Wednesdays 9.30 - 10.45

Great books deal with universal themes as they have been repeated, echoed and modified through the ages. Employing a variety of narrative techniques, their storytelling with a focus on the extraordinary and heroic as well as the everyday and commonplace, provides us with a rich legacy. Above all their meditations on the human condition help us, as individuals, groups and nations to consider the most fundamental of all questions, "How should we live our lives?"

## YOUR LIFE

### Y5 COOKING WITH FRIENDS

(mostly men)

(Judith Hodges)

At home in Northbourne Autumn & Spring Monthly

Monday 9.30 - 12.30

Dates 2018: Sept 17<sup>th</sup>, Oct 15<sup>th</sup>, Nov 19<sup>th</sup>, Dec 10<sup>th</sup>

2019: Jan 21<sup>st</sup>, Feb 11<sup>th</sup>, Mar 18<sup>th</sup>



### Y5A COOKING WITH FRIENDS

(mostly ladies)

(Judith Hodges)

At home in Northbourne Autumn & Spring Monthly Monday  
9.30 - 12.30

Dates 2018: Oct 1<sup>st</sup>, Nov 5<sup>th</sup>, Dec 3<sup>rd</sup>

2019: Jan 7<sup>th</sup>, Feb 4<sup>th</sup>, Mar 4<sup>th</sup>, Apr 1<sup>st</sup>

Relaxed, hands-on cookery groups.

The first session will be 'everyday suppers', and the members will decide what they wish to cook in future sessions. All equipment is provided but the cost of ingredients is shared between participants.

### Y9 BON VIVEURS

(Richard Tucker)

Details for each meeting to be advised by email

Fridays 12.30 - 2.30

Autumn

This Group involves practical food-related topics which will include restaurant visits, wine tasting and outdoor visits. Venue suggestions from Group members will be welcomed.

Additional costs will be involved and members may be asked to make a financial commitment where visits are numbers-dependent.

### Y10 CHRISTMAS BAKES AND MAKES

(Judith Hodges)

At home in Northbourne Single session

Monday November 26<sup>th</sup> 2018

9.30 - 1.30

We will be cooking Christmas items such as canapes, gingerbread, stollen, an 'alternative' Christmas cake, savoury pastries, together perhaps with some 'presents' such as chocolate truffles, turkish delight or fudge. All equipment is provided but the cost of ingredients is shared between participants. Please bring tins to transport your goodies home, and an apron if you usually wear one. Refreshments will be provided.

### Y11 NEW BEYOND THE SIMPLE SPONGE

(Judith Hodges)

At home in Northbourne Single session

Monday January 28<sup>th</sup> 2019

10am - 4pm

We will be cooking and decorating more complex cakes, for when you want to impress!

All equipment is provided but the cost of ingredients is shared between participants. Please bring tins to transport your goodies home, and an apron if you usually wear one. A simple

Please note that all groups must buy their own kit or equipment, (other than for audio/visual, which can be borrowed, on request, from FU3A).

## MORE INFORMAL GROUPS

### Z1 3 MILE WALKS

(Richard Buxton)

Second Friday of each month 10.00am start

A walk of around 3 miles with no stiles and a point of interest, finishing at a pub for lunch, if you wish. Please e-mail [buxton.home@nasuwt.net](mailto:buxton.home@nasuwt.net) if you would like details of the walk each month.



### Z2 5 MILE PUB WALKS

(Ian Burr)

Third Friday of each month 10.00am start

Easy walks within 25 miles of Ferndown, followed by a pub lunch. Lifts are available  
E-mail: [ianburr353@btinternet.com](mailto:ianburr353@btinternet.com). Tel: 01202 855529

### Z3 SATURDAY SINGLES' SOCIAL GROUP

(Pat O'Riordan)

Second Saturday of each month

This is a group of members who, primarily because they live alone, meet for a pub lunch.

## A BRIGHT FUTURE FOR FU3A....

At the moment we have a thriving and vibrant U3A, and we intend to make sure it stays that way.

**That means attracting new members, as well as retaining those members we already have.**

**This year we would like to task each member to try to sign-up a new member. This shouldn't be too difficult as we all think our U3A is great!!**

*With people being forced to work for longer we are not getting as many new members at the younger end of our demographic. We aren't asking for new members to jump right in with offers to run Groups or to fill a Committee role, but more members means more exposure and will help us to attract the leaders of the future.*

## HEALTH & SAFETY

Although much maligned, these two words are actually very important. Over the last year we have been making a concerted effort to ensure that all the premises you use are 'safe and healthy!'

Where appropriate we have conducted our own assessments of all the accommodation we use as well as asking these venues to provide us with their own versions which cover a wider scope than we are able to assess.

All this is good news – however, we must stress that everyone attending U3A Groups does have a responsibility to take care for their *own safety*.

This simply means taking a common sense approach and:-

Look where you are going – be aware of cables and leads

Don't lift anything that looks too heavy

Beware of slippery surfaces

Be aware of others around you

Should an accident occur – your Group Leader will know the procedure to follow and the necessary form to complete.

Please do not let this interfere with enjoying your class!

Thank you

Clare Clayton Accommodation Officer

## ACCESSIBILITY

**If you are disabled and need assistance of any kind, please write to the Membership Secretary and we will do everything we can to meet your needs.**

**Similarly, if you do not drive and find that public transport is not easily available to you, ask the Group Leader to approach the Group members to see if there is someone who would be willing to give you a lift.**

## PHOTOGRAPHS



***We sometimes take photos to use in displays, on the WEBSITE or in the NEWSLETTER. It is your responsibility to exclude yourself from any photographs, if you do not wish to be included in this way.***

## SOCIAL EVENTS

Throughout the year our Visits and Events team arrange a wide selection of social occasions and visits. Some of these take place outside of term dates and so provide a social link for members, even when individual Groups are not running.

*This year we are continuing our **First Fridays** theme through the Summer months and we hope the prospect of a free tea or coffee with some in-house entertainment will tempt you to maintain contact out of term with U3A friends and members.*

This is just a taster of the coming year's offering:

### Confirmed events - 2018

May 25<sup>th</sup> - FU3A Open Day

July 20<sup>th</sup> - Visit 1 to RNLI, Poole

August 24<sup>th</sup> - Visit 2 to RNLI, Poole

September 7<sup>th</sup> - New Members' Welcome Party

### Scheduled events - 2018

May 12<sup>th</sup> - Whist Drive

June 1<sup>st</sup> - Fun Quiz

July 6<sup>th</sup> - Beetle Drive

September 29<sup>th</sup> - Visit to Oxford's Bakery, Alweston

September/October - Barn Dance

October/November - Visit to Met Office, Exeter

December 11<sup>th</sup> - Drama Group Panto

### Coming up in 2019

Visit to Southampton University Oceanic Department

Study Visit to Malta

Moors Valley Nordic Walking

Possible visit to the Classic Spectacular at the Royal Albert Hall

ARE YOU MAKING THE MOST OF THE  
INFORMATION AVAILABLE TO YOU?

VISIT THE FERNDOWN U3A WEBSITE

*(Currently undergoing re-design)*



[www.ferndownu3a.co.uk](http://www.ferndownu3a.co.uk)

*If you don't have a computer you can go online via a tablet,  
smart phone  
or in the Library*

*Alternatively you could ask a friend*

*to go online on your behalf*

### REVISED GENERAL DATA PROTECTION REGULATIONS

We are required by a change of legislation to obtain your authority to use any of your information for membership and communication purposes.

You will find a statement on the Enrolment Form which you should sign  
ONLY if you agree to your information being used in this way.

### DETAILS FOR EACH VENUE

**Ferndown Village Hall (FVH), Mick Arnold Room and Studio \*\***  
Church Road, Ferndown BH22 9ET

**St Anthony's Church Hall, West Moors**  
8 Pinehurst Road, West Moors BH22 0AP

**St Mary's Church**  
Church Road, Ferndown BH22 9EU  
Telephone: 01202 897087

**United Church, Ferndown**  
505 Wimborne Road, Ferndown BH22 9NF

**St Mark's Church, West Parley**  
250 New Road, West Parley BH22 8EW

**Barrington Centre**  
Penny's Walk, Ferndown BH22 9TH  
Telephone: 01202 894858

**United Reformed Church**  
Ringwood Road, Longham BH22 9AW

**Ferndown Youth Centre**  
Mountbatten Drive, Ferndown BH22 9FB  
Telephone: 01202 874448

**Ferndown British Legion (FBL), Hall and Upstairs Area \*\***  
Church Road, Ferndown BH22 9ET

**Ferndown Library**  
1 Penny's Walk, Ferndown BH22 9TH.  
Telephone: 01202 874542

**Pinehurst Community Church**  
90 Pinehurst Rd, West Moors, Ferndown BH22 0AR

**Ferndown Scout Centre**  
Cabin, Cherry Grove, Ferndown BH22 9EZ

*\*\* Please be aware that these two venues (Ferndown Village Hall, Studio and Ferndown British Legion, Upstairs Area) are not on the ground floor but there is a stair-lift in both locations.*

*The stair-lifts can take some time to negotiate so it is wise to arrive a little before the start time of your Group, so that you do not miss the beginning.*

## Mornings 2018- 2019

### MONDAY

<b>A1</b>	Art Workshop 1	9.30 - 12.30		Barrington, Hayes
<b>K15</b>	Super Movers	9.30 - 10.45		Barrington, Conference
<b>Y5</b>	Cooking with Friends	9.30 - 12.30	Monthly Autumn & Spring	At home in Northbourne
<b>Y5A</b>	Cooking with Friends	9.30 - 12.30	Monthly Autumn & Spring	At home in Northbourne
<b>Y10</b>	Christmas Bakes and Makes	9.30 - 1.30	Nov 26 <sup>th</sup> 2018	At home in Northbourne
<b>Y11</b>	Beyond the Simple Sponge	10.00 - 4.00	Jan 28 <sup>th</sup> 2019	At home in Northbourne
<b>H15</b>	Roman History	11.00 - 12.15	Autumn	Barrington, Conference

### TUESDAY

<b>A4</b>	Art for All	9.30 - 12.00		Barrington, Hayes
<b>A5</b>	Watercolours and Mixed Media	9.30 - 12.30		Barrington, Conference
<b>D10</b>	Psychology	9.30 - 10.45	Fortnightly	Ferndown British Legion, Upstairs
<b>D18</b>	Economics of Everyday Life	9.30 - 10.45	Autumn & Spring	Barrington, Studio
<b>W8</b>	The Bible in Literature	9.30 - 10.45	Autumn & Spring	St Mary's, Church Lounge
<b>A9</b>	Oodles of Doodles - Art Therapy	9.30 - 12.30		Ferndown Library, Upstairs
<b>T14</b>	The Solar System and our place in it	10.30 - 11.45	Fortnightly Autumn & Spring	Ferndown Village Hall, Mick Arnold Room
<b>C7</b>	Crafts	11.00 - 12.30		Barrington, Studio

### WEDNESDAY

<b>A7</b>	Ten Great Paintings	9.30 - 10.30	Spring	Barrington, Studio
<b>K4</b>	Table Tennis - Improvers	9.30 - 10.45		Ferndown Youth Centre
<b>W14</b>	Great Books, Great Ideas	9.30 - 10.45		St Mary's, Venue 1
<b>K13</b>	Ballroom / Latin Dancing	9.30 - 11.00		Ferndown British Legion
<b>L9</b>	German Language year 5	9.30 - 10.45		Ferndown Youth Centre, Rm
<b>G2</b>	Jigsaw Puzzles	10.00 - 12.00	Fortnightly Autumn & Spring	At home in Kinson
<b>L5</b>	Spanish	10.45 - 12.15		At home in Ferndown
<b>K5</b>	Table Tennis - Experienced	11.00 - 12.15		Ferndown Youth Centre
<b>D16</b>	Random Thoughts	11.00 - 12.15	Fortnightly/Autumn	Ferndown British Legion, Upstairs
<b>A6</b>	Art History	11.00 - 12.15	Monthly	Ferndown Village Hall, Studio
<b>H3</b>	Blue Lamp – Part 4	11.00 - 12.15	Spring	Barrington, Conference
<b>H14</b>	History of Ireland	11.00 - 12.15		Barrington, Studio
<b>D5A</b>	Current Affairs 2	11.00 - 12.15		Ferndown Youth Centre, Rm
<b>H2</b>	Making of English People	11.15 - 12.45	Spring	Ferndown Village Hall, Mick Arnold Room
<b>W3</b>	Readers' Circle	11.00 - 12.15	Monthly	Ferndown British Legion, Upstairs

## Mornings 2018 - 2019 (cont.)

### THURSDAY

<b>M11</b>	Ukelele - Beginners	9.00 - 10.30		At home in Ferndown
<b>H5</b>	Family History - the basics	9.30 - 10.45	Autumn	Ferndown Village Hall, Mick Arnold Room
<b>H6</b>	Family History - further back	9.30 - 10.45	Spring	Ferndown Village Hall, Mick Arnold Room
<b>D5</b>	Current Affairs	9.30 - 10.45		Barrington, Conference
<b>L11</b>	German - year 3	9.30 - 10.45		At home in Ferndown
<b>W1</b>	Shakespeare	9.30 - 10.45	Autumn & Spring	At home in Ferndown
<b>W4</b>	Creative Writing	10.00 - 11.15		Ferndown Village Hall, Studio
<b>D7</b>	A Broad Look at the Law	11.00 - 12.30	Fortnightly Autumn	Barrington, Conference
<b>K8</b>	English Country Dancing 18 <sup>th</sup> C	11.00 - 12.30		Ferndown British Legion
<b>C6</b>	Hints and Tips for Home Maintenance	11.15 - 12.30	Autumn	Barrington, Conference

### FRIDAY

<b>K9</b>	Table Tennis - Experienced 1	9.30 - 11.00		St Anthony's Church Hall
<b>J1</b>	Discovering Wessex	10.30 - 12.00	Monthly	Barrington, Conference
<b>K10</b>	Table Tennis - Experienced 2	11.00 - 12.30		St Anthony's Church Hall

### SATURDAY

<b>N1</b>	Nature Walks		Monthly	
-----------	--------------	--	---------	--

## Afternoons 2018 - 2019

### MONDAY

<b>B1</b>	Chicago Bridge Club	1.30 - 4.30		Barrington, Hayes
<b>K14</b>	Badminton for Fun	1.30 - 4.30		Ferndown Village Hall
<b>T1</b>	Astronomy	2.00 - 4.00		Ferndown Village Hall, Studio
<b>D11</b>	World Religions - 2	2.00 - 3.30	Autumn/Spring	At home in Ferndown
<b>M12</b>	Sing Along with great backing tracks	2.00 - 3.30		At home in Ensbury Park
<b>M1</b>	Enjoying Music	2.15 - 3.45		Ferndown Village Hall, Mick Arnold Room
<b>W10</b>	Crime and Thriller book group	3.00 - 4.30	Monthly Autumn/Spring	At home in Ferndown

### TUESDAY

<b>K1</b>	Badminton 1	1.00 - 2.30		Ferndown Village Hall
<b>T13</b>	E-Bay for Beginners	1.00 onwards	Jan 29 <sup>th</sup> 2019	Ferndown Village Hall Mick Arnold Room
<b>B2</b>	Duplicate Bridge -Selected standard	1.30 - 4.30		Barrington, Studio
<b>A10</b>	Abstract Art for the fearless	1.30 - 3.30	Autumn	Ferndown Library, Upstairs
<b>K3</b>	Line Dancing	1.30 - 2.30		Ferndown Youth Centre

## Afternoons 2018- 2019 (Continued)

### **TUESDAY (cont)**

<b>W2</b>	Drama Workshop	2.00 - 4.00		Ferndown British Legion
<b>M9</b>	The Really Awful Singing Group	2.00 - 3.15	Monthly	Ferndown Village Hall, Studio
<b>K2</b>	Keep Fit & Healthy Badminton	2.30 - 4.30		Ferndown Village Hall
<b>K11</b>	English Country Dancing Workshop	4.30 - 6.00		Ferndown Village Hall

### **WEDNESDAY**

<b>M10</b>	Ukelele Band	1.15 - 2.45		Ferndown Youth Centre
<b>G1</b>	Scrabble, Canasta and other games	1.15 - 3.15		Ferndown Village Hall, Mick Arnold Room
<b>B3</b>	Duplicate Bridge	1.30 - 4.30		Barrington, Conference
<b>C3</b>	Beadwork	1.30 - 3.15		Ferndown Village Hall, Studio
<b>BA1</b>	Beginners Bridge	1.30 - 4.30		Barrington, Hayes
<b>BA2</b>	Improvers Bridge	1.30 - 4.30		Barrington, Studio
<b>J4</b>	Travelogue - The Island of Malta	1.30 - 2.45	March	Ferndown Scout Centre
<b>K6</b>	Keep Fit	2.00 - 3.00		United Church, Ferndown
<b>D3</b>	Greenfingers	2.00 - 4.00	Monthly	At various homes
<b>D6</b>	Introduction to Philosophy	2.00 - 3.00	Autumn	At home in Northbourne
<b>H13</b>	In Our Lifetime	3.30 - 4.45	Autumn	Ferndown Village Hall, Studio

### **THURSDAY**

<b>B4</b>	Chicago Bridge	1.30 - 4.30		Barrington, Hayes
<b>W5</b>	Play Reading	2.00 - 4.00		At home in Ferndown
<b>M3</b>	Enjoy Singing	2.00 - 3.15		Pinehurst Community Chapel
<b>M4</b>	Music Appreciation	2.00 - 4.00	Fortnightly	St Mary's, Beacon Room

### **FRIDAY**

<b>Y9</b>	Bon Viveurs	12.30 - 2.30	Autumn	Various
<b>M5</b>	Opera	1.30 - 4.00	Monthly	At home in Colehill
<b>B6</b>	Chicago Bridge	1.30 - 4.30		Barrington, Studio
<b>M6</b>	Anything but Opera	2.00 - 4.00	Fortnightly Autumn/Spring	At home in Parley
<b>W6</b>	Film Studies	2.00 - 4.30	Fortnightly Autumn/Spring	Barrington, Hayes

**Sometimes dates and times may be changed by agreement between  
Group Leaders and members.**